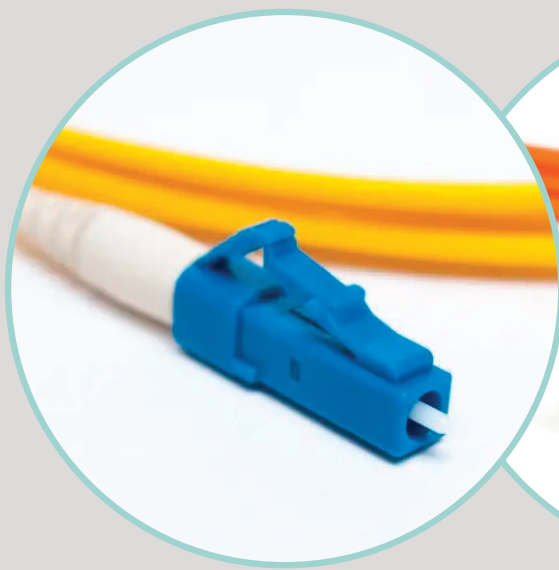


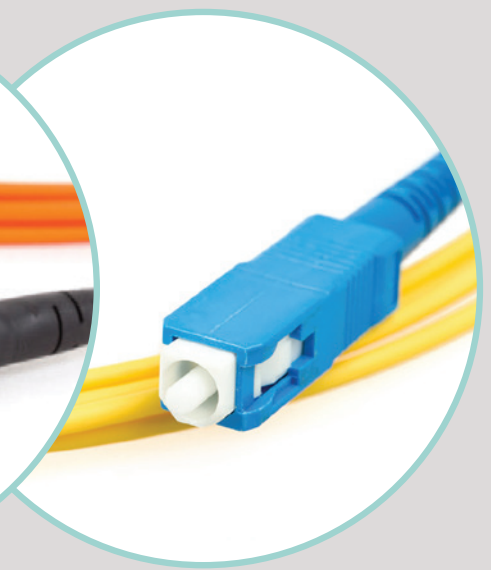
# SPLICE ON CONNECTORS



**LC CONNECTOR**



**MPO CONNECTOR**

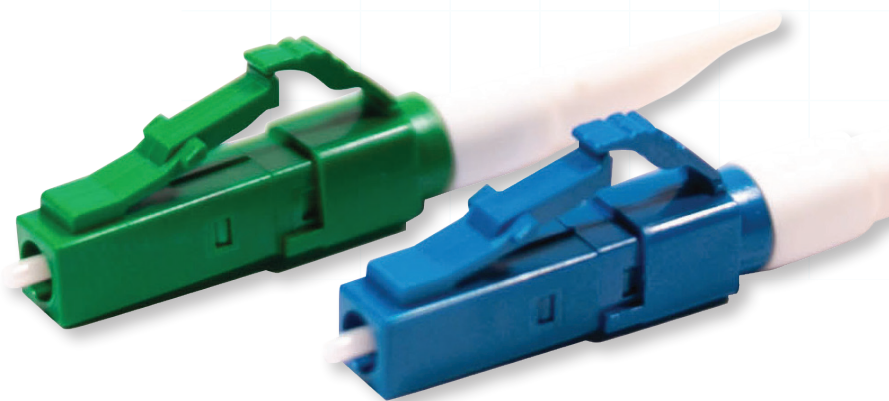


**SC CONNECTOR**

## SPLICE ON CONNECTORS

# LC CONNECTOR

For High-Density Optical Transmissions



### FEATURES

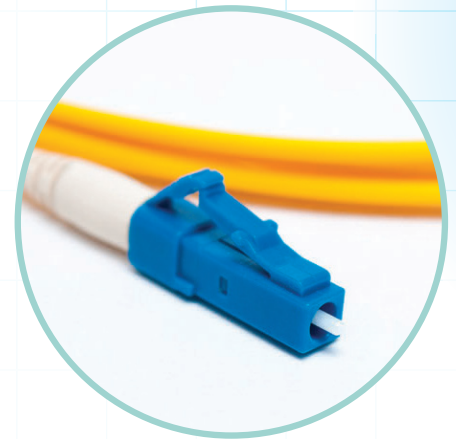
- Factory installed fibre stubs using high quality fibre provide verified performance
- Factory polished and inspected ferrule end faces ensure optimum fibre optic connectivity and easy termination
- Enhanced high tensile strength for improved field terminations and FOCIS compliant connector interfaces
- Verified performance to and compliance with TIA-568-C.3
- Ideal for use in high-density applications such as FTTH and data centers, as well as, LAN, POL, and CATV
- Swift 25-year warranty available

### Connector Colour Code

FIBRE		FIBRE STUB COLOUR	HOUSING COLOUR
OM1		orange	beige
OM3		aqua	aqua
OM4		violet	aqua
SM (G.652.D)	UPC	yellow	blue
	APC	yellow	green
SM (G.657.A1)	UPC	white	blue
	APC	white	green
SM (G.657.A2)	UPC	blue	blue
	APC	blue	green
SM (G.657.A3)	UPC	red	blue
	APC	red	green

## Performance Specifications

ITEM	SINGLEMODE		MULTIMODE
	UPC	APC	UPC
Tensile	>60 newtons		
Return loss	>50dB	>60dB	>30dB
Insertion loss	average <0.15dB (max <0.30dB)		



## Ordering Information

PART NUMBER*	DESCRIPTION
LCS-SM-UPC-09/SA	Singlemode, UPC, 900 micron
LCS-SM-UPC-20/SA	Singlemode, UPC, 2mm
LCS-SM-APC-09/SA	Singlemode, APC, 900 micron
LCS-SM-APC-20/SA	Singlemode, APC, 2mm
LCS-OM1-UPC-09/SA	Multimode, OM1, UPC, 900 micron
LCS-OM1-UPC-20/SA	Multimode, OM1, UPC, 2mm
LCS-OM2-UPC-09/SA	Multimode, OM2, UPC, 900 micron
LCS-OM2-UPC-20/SA	Multimode, OM2, UPC, 2mm
LCS-OM3-UPC-09/SA	Multimode, OM3, UPC, 900 micron
LCS-OM3-UPC-20/SA	Multimode, OM3, UPC, 2mm
LCS-OM4-UPC-09/SA	Multimode, OM4, UPC, 900 micron
LCS-OM4-UPC-20/SA	Multimode, OM4, UPC, 2mm

\*Above part numbers are Simplex Connectors. For Duplex Connectors, substitute "S" with "D" in part number.

## Related Products

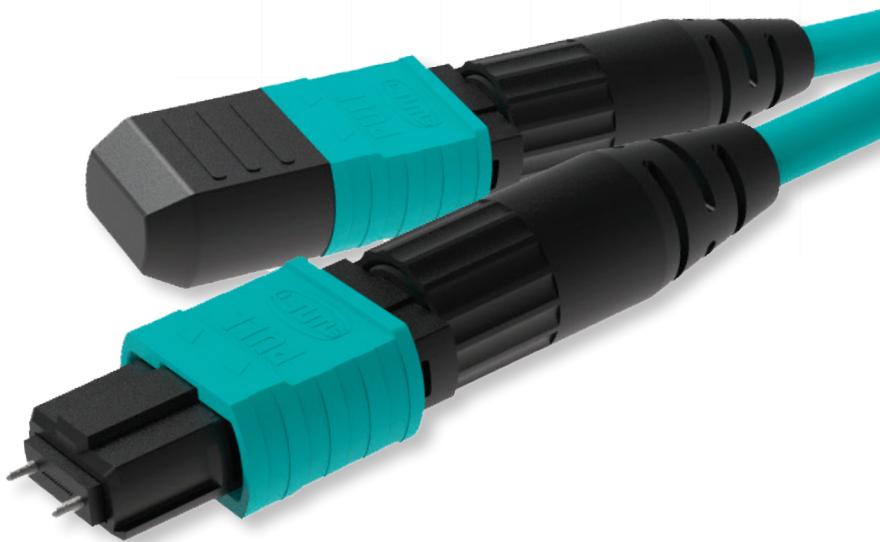
SYSTEM	DESCRIPTION
KF4A	Active V-groove clad alignment splicer, includes hard case (Includes (2) HS-900µm holders, (1) KF4-ILC holder, (1) KF4-SC/FC holder)
K33A	Core Alignment Splicer, includes hard case (Includes (2) HS-900um holders, (2) HS-250um holders. FSOC holders sold separately) —Fibre and connector holder sold separately—
HS-250	250µm fibre holder (pair) – KF4A, K33 and K33A
HS-900	900µm fibre holder (pair) – KF4A, K33 and K33A
LS-900L	Loose tube fibre holder (left side only) – KF4A, K33 and K33A
KF4-ILC	LC connector holder – KF4A
HS-ILC	LC connector holder – K33 and K33A



## SPLICE ON CONNECTORS

# MPO CONNECTOR

## Swift MPO Connector



### FEATURES

- Factory installed fibre stubs using high quality fibre provide superior optical performance
- Factory polished and inspected ferrule end faces ensure optimum fibre optic connectivity and easy terminations
- Enhanced tensile strength for improved field terminations FOCIS compliant connector interfaces
- Internal testing to verify performance and compliance with TIA-568-C.3
- Ideal for use in FTTX networks, LAN, datacom and telecom applications including point to point and passive optical networking

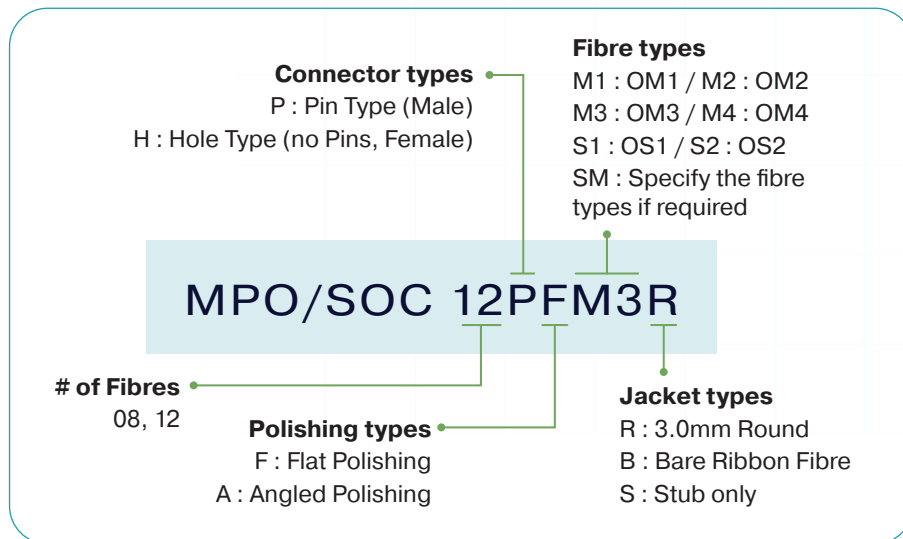
### Connector Colour Code

FIBRE		FIBRE STUB COLOUR	HOUSING COLOUR
OM1			beige
OM3			aqua
OM4			aqua
OS1	Standard	12 ribbon pre-stripped and cleaved	green
	Low-loss		yellow
OS2	Pre-stripped		green
	Cleaved		yellow

## Performance Specifications

CONNECTOR TYPES	POLISHING TYPES	TYPICAL INSERTION LOSS (DB)	MAX. INSERTION LOSS (DB)	RETURN INSERTION LOSS (DB)
MPO (MM)	Flat	0.15	0.35	≥20
MPO (SM)	APC	0.15	0.35	≥60

## Ordering Information



## Related Products

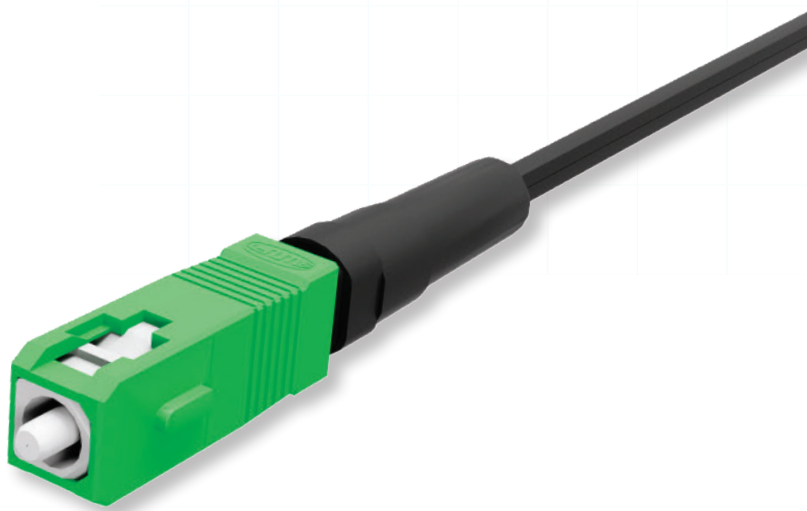
SYSTEM	DESCRIPTION
KR12A	All-In-One Ribbon V-Groove splicer, includes hard case (Includes (2) H7-12-10 holders)
KR12	V-Groove splicer includes hard case (Includes (2) H7-12-10 holders)
CI-03RT	Ribbon cleaver, up to 12 fibres
IRS-01	Rollable ribbon fibre separator
MPO-10	MPO FSOC holder
CK-01	Splicer cleaning kit
RK-01	Ribbonizing tool
RBSW-25AN-KIT	250µm Ribbon fibre aligner (rollable ribbon)



## SPLICE ON CONNECTORS

# SC CONNECTOR

Push Pull Coupling for Solid Terminations

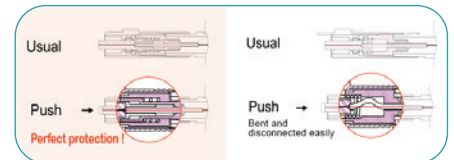


### FEATURES

- Factory installed fibre stubs using high quality fibre provide superior optical performance
- Factory polished and inspected ferrule end faces ensure optimum fibre optic connectivity and easy terminations
- Enhanced tensile strength for improved field terminations and FOCIS compliant connector interfaces
- Verified performance to and compliance with TIA-568-C.3
- Ideal for FTTX, LAN, datacom and telecom

### Connector Colour Code

FIBRE		FIBRE STUB COLOUR	HOUSING COLOUR
OM1		orange	beige
OM3		aqua	aqua
OM4		violet	aqua
SM (G.652.D)	UPC	yellow	blue
	APC	yellow	green
SM (G.657.A1)	UPC	white	blue
	APC	white	green
SM (G.657.A2)	UPC	blue	blue
	APC	blue	green
SM (G.657.A3)	UPC	red	blue
	APC	red	green



Swift Fusion SOC

Other Fusion SOC's

## Performance Specifications

ITEM	SINGLEMODE		MULTIMODE
	UPC	APC	UPC
Tensile		>60 newtons	
Return loss	>50dB	>60dB	>30dB
Insertion loss	average <0.15dB (max <0.30dB)		



## Ordering Information

PART NUMBER*	DESCRIPTION
SC-SM-UPC-09	Singlemode, UPC, 900 micron
SC-SM-UPC-20/30	Singlemode, UPC, 2mm and 30mm
SC-SM-APC-09	Singlemode, APC, 900 micron
SC-SM-APC-20/30	Singlemode, APC, 2mm and 30mm
SC-OM1-UPC-09	Multimode, OM1, UPC, 900 micron
SC-OM1-UPC-20/30	Multimode, OM1, UPC, 2mm and 30mm
SC-OM2-UPC-09	Multimode, OM3, UPC, 900 micron
SC-OM2-UPC-20/30	Multimode, OM3, UPC, 2mm and 30mm
SC-OM4-UPC-09	Multimode, OM4, UPC, 900 micron
SC-OM4-UPC-20/30	Multimode, OM4, UPC, 2mm and 30mm

\*Above part numbers are Simplex Connectors. For Duplex Connectors, substitute "S" with "D" in part number.

## Related Products

SYSTEM	DESCRIPTION
<b>KF4A, KF4AV, KF4A-HDC</b>	Cladding alignment fusion splicers for single fibre fusion splicing (Includes (2) HS-900µm holders, (1) KF4-ILC holder, (1) KF4-SC/FC holder)
<b>K33, K33A, K33A-HDC</b>	Core alignment fusion splicers for single fibre fusion splicing (Includes (2) HS-900um holders, (2) HS-250um holders. FSOC holders sold separately) Separate connector holder purchase may be necessary with some splicer models
<b>HS-250</b>	250µm fibre holder (pair) – KF4A, K33 and K33A
<b>HS-900</b>	900µm fibre holder (pair) – KF4A, K33 and K33A
<b>LS-900L</b>	Loose tube fibre holder (left side only) – KF4A, K33 and K33A
<b>KF4-SC/FC</b>	SC/FC connector holder – KF4A
<b>HS-SC/FC</b>	SC/FC connector holder – K33 and K33A



### CONTACT:

Unit 4 / 277 Lane Cove Road, Macquarie Park, NSW 2113  
 Call: +61 2 8553 0600 Email: sales@fibresystems.com.au  
[www.fibresystems.com.au](http://www.fibresystems.com.au)

002 Revision 01, 08.25

